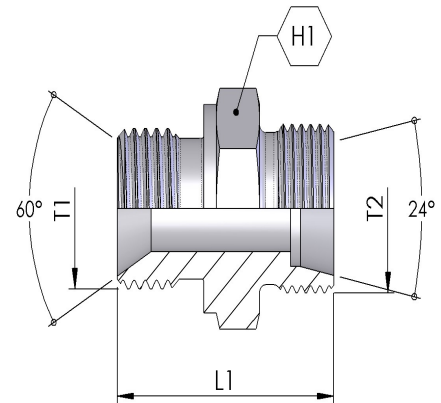


STRAIGHT ADAPTORS

B-ML

BSP MALE X MET LIGHT MALE
 BSP 60° CONE MALE X METRIC 24° CONE LIGHT
 MALE STRAIGHT

- For BSP Stud Ends Refer BX-ML series



Part Number	Suits Tube	T1	T2	L1 (mm)	H1 (mm)	PN (bar)
B-ML-0412	6	1/4-19	M12-1.5	29	19	315
B-ML-0414	8	1/4-19	M14-1.5	29	19	315
B-ML-0416	10	1/4-19	M16-1.5	30	19	315
B-ML-0614	8	3/8-19	M14-1.5	30.5	22	315
B-ML-0616	10	3/8-19	M16-1.5	31.5	22	315
B-ML-0618	12	3/8-19	M18-1.5	31.5	22	315
B-ML-0622	15	3/8-19	M22-1.5	31.5	22	315
B-ML-0814	8	1/2-14	M14-1.5	33	27	315
B-ML-0816	10	1/2-14	M16-1.5	34	27	315
B-ML-0818	12	1/2-14	M18-1.5	34	27	315
B-ML-0822	15	1/2-14	M22-1.5	35	27	315
B-ML-0826	18	1/2-14	M26-1.5	36	27	315
B-ML-1218	12	3/4-14	M18-1.5	39	32	315
B-ML-1222	15	3/4-14	M22-1.5	38	32	160
B-ML-1226	18	3/4-14	M26-1.5	38	32	160
B-ML-1230	22	3/4-14	M30-2	40	32	160
B-ML-1636	28	1-11	M36-2	43	41	160